

Collection Management - Current Issues

When: Wednesday 7
November 2018

Where: Gippsland Art Gallery
70 Foster Street
Sale VIC 3850

**Professional Development
Program 2018**
Semester 2, Session 12



BOOKINGS CLOSE MIDDAY 1 NOVEMBER 2018 - BOOK NOW

Collection Management - Current Issues

Wednesday 7 November 2018

When: 10am - 3.30pm, Wednesday 7 November 2018
Where: Gippsland Art Gallery
70 Foster Street
Sale VIC 3850
(Carang Carang Room)

Collections are significant assets for galleries, both in terms of their cultural and financial value. The professional care for and management of a collection is critical. Good practices ensure works are appropriately cared for so they may be enjoyed by future generations, and also facilitates improved community access and engagement.

Through this one day program, participants will brush up on a number of current and emerging issues. The Department of Communications and the Arts will provide a refresher on the restrictions and requirements of Cultural Gifts, which are vital to the growth of many collections, and will also discuss the Protection of Cultural Objects on Loan for works borrowed from overseas lenders for temporary public exhibition in Australia.

RMIT along with Bundoora Homestead Art Centre will provide case studies and tips for digitising your collection, including the importance of metadata and how to achieve online accessibility. The Art Gallery of Ballarat will discuss a recent experience in deaccessioning a work from its collection, followed by an open discussion for attendees to discuss pressing issues with their peers.

The session will conclude with a guided tour of the refurbished back of house and collection stores of the Gippsland Art Gallery, along with their current exhibitions, the **John Leslie Art Prize** and Kevin Lincoln's **Impressions of Gippsland**.

Presenter

The Public Galleries Association of Victoria is the peak body for public galleries, and is proud to deliver an enhanced Professional Development Program in 2018 as part of its commitment to facilitating capacity building across the sector.



Presentation Partners

The PGAV wishes to thank the following *Collection Management - Current Issues* Presentation Partners.



Organisation Supporters

The PGAV is supported by the Victorian Government through Creative Victoria and receives significant in-kind support from the National Gallery of Victoria.



Wednesday 7 November 2018

Carang Carang Room, Gippsland Art Gallery, 70 Foster Street, Sale VIC 3850



Registrations:
from 10 am



Lunch:
12 pm



Afternoon Tea:
2.30 pm

TIME	SESSION	PRESENTERS
10.25 am	WELCOME	ERIC NASH, PGAV
10.30 am	PRESENTATION: A refresher of the Australian Government's Cultural Gifts Program, along with Protection of Cultural Objects on Loan for cultural objects on loan from overseas lenders for temporary public exhibition in Australia.	JOANNE NAVARRETE AND PENELOPE GRIST, Department of Communications and the Arts
11 am	PRESENTATION: A case study into RMIT's collection digitisation with a focus on the importance of metadata - how to define, assign, and make searchable.	JON BUCKINGHAM, RMIT Gallery
11.20 am	PRESENTATION: Moving the City of Darebin Art Collection online; choosing the right collection database system for your collection; working with a third party to design the perfect database; data transfer and input challenges; lessons learned.	ELLA HUGHES, Bundoora Homestead Arts Centre
11.40 am	Q&A: An opportunity to broadly discuss the digitisation of collections and related issues with Ella Hughes and Jon Buckingham.	JON BUCKINGHAM, RMIT Gallery ELLA HUGHES, Bundoora Homestead Arts Centre
12.45 pm	PRESENTATION: Anne Rowland presents a case study exploring challenges and lessons learned from a recent deaccessioning project undertaken by the Art Gallery of Ballarat.	ANNE ROWLAND, Art Gallery of Ballarat
1.10 pm	OPEN DISCUSSION: Bring along your questions and current issues to discuss them in an open forum with peers and presenters.	OPEN FORUM
1.45 pm	BACK OF HOUSE TOUR: A tour through the recently refurbished Gippsland Art Gallery, with particular focus on collection storage provisions and future growth planning.	SIMON GREGG AND LINDSAY ROBERTS, Gippsland Art Gallery
3 pm	EXHIBITION TOUR: A guided tour of the <i>John Leslie Art Prize</i> , and Kevin Lincoln's exhibition <i>Impressions of Gippsland</i> .	SIMON GREGG AND ERIN MATHEWS, Gippsland Art Gallery

Notes and Questions

Use this space to record any notes from the session, or to write down questions you would like to raise during the panel discussion.



Presenters



Australian Government

**Department of Communications
and the Arts**

Department of Communications and the Arts

Protection of Cultural Objects on Loan scheme and the Cultural Gifts Program

The Australian Government Department of Communications and the Arts encourages excellence in the arts, helps to protect our cultural heritage and supports public access to and participation in, arts and culture in Australia. This includes advising government on best practice for the management of cultural material, developing quality collections and ensuring ethical collecting in Australia.

The Department's Collections Access section manages the Protection of Cultural Objects on Loan scheme, Australian Government International Exhibitions Insurance program,

Visions of Australia program, National Collecting Institutions Touring and Outreach program and provides support in relation to collections policy issues and publications. The Private Sector Support section manages the Cultural Gifts Program, the Register of Cultural Organisations, and provides policy support in relation to philanthropy and fundraising, including engagement with Creative Partnerships Australia.

cgp.mail@arts.gov.au

protectionofloans@arts.gov.au

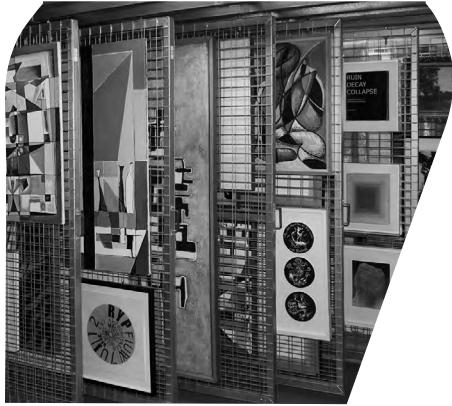
CollectionsDevelopment@arts.gov.au

Speakers

Joanne Navarrete is a Senior Program Officer administering the Cultural Gifts Program in the Department of Communications and the Arts. Joanne has been a member of the CGP team for three years and a member of the Australian Government Arts division for 13 years.

Penelope Grist is an Acting Assistant Director of the Collections Access section in the Department of Communications and the Arts. Penelope is currently on a temporary transfer from the National Portrait Gallery and has been with the Department since July 2018.

Presenters



Jon Buckingham
Collections Coordinator,
RMIT Gallery

Jon Buckingham has spent over 15 years in the arts industry, firstly in the commercial sector, and more recently at RMIT Gallery where he is currently the Collections Coordinator, responsible for the growth and administration of the RMIT University Art Collection. In this role, he manages the development and care of roughly 2000 fine art objects, overseeing acquisitions and donations, cataloguing and digitisation, maintenance, loans and registry.

As part of the RMIT's campus development program, he also project-manages the commission and installation of large scale artworks in public spaces and

coordinates rotating displays across the university's various campuses. Jon has curated a number of exhibitions, including *Sound Bites City* (2013), *Revelations* (2014), *Against the Grain* (2015), *Quiddity* (2016), and *Chaos & Order* (2018).



Simon Gregg
Director,
Gippsland Art Gallery

Simon Gregg is Director of Gippsland Art Gallery, having previously been Curator from 2009 to May 2018.

Simon's previous roles include Senior Curator at City Museum at Old Treasury, Spring Street (2005-2009), and Heide Museum of Modern Art (1997-2005). Simon has written several books on Australian art, including *New Romantics: Darkness and Light in Australian Art*, and *Nicholas Chevalier: Australian Odyssey*. In 2012 he was the recipient of the Copland Foundation Nina Stanton Attingham Trust Scholarship to study the British Royal Art Collection, and he has curated over 200 exhibitions of Australian art and culture.

Presenters



Ella Hughes
Gallery Director,
Bundoora Homestead Art Centre

Ella Hughes is a Gallery Director and artist/ceramicist. Ella began her arts career in New Zealand as an aspiring actor but quickly moved on to film and television production. After a jump to arts marketing Ella headed to Melbourne to run arts events at Fitzroy Library and then to Ireland to help run the *Cork Film Festival*. Back in Melbourne Ella has worked for Melbourne Citymission and *Melbourne Fringe* and has held positions in community cultural development, festivals management, local government and as a practising artist.

Ella is currently the Gallery Director at Bundoora Homestead Art Centre where she has implemented a new

collection management database, major green upgrade of the art collection store, adopted a new Art Collection Policy, and introduced commissioning of contemporary artists into the art collection acquisitions process. Ella is very good at getting things done and not very good at sitting still.



Erin Mathews
Curator,
Gippsland Art Gallery

Erin is the Curator at Gippsland Art Gallery, having started this role in July 2018.

Erin's previous roles include Assistant and Senior Curator at Latrobe Regional Gallery. During this time, she curated exhibitions such as *Bound by Time: Denis Beaubois* and co-curated *Mine – The Film Will Always Be With You*.

Erin completed a Master of Art Curatorship at the University of Melbourne in 2013. She has also spent two years living in London and worked with a commercial gallery to deliver a stand at the Masterpiece Art Fair.



Lindsay Roberts
Technician,
Gippsland Art Gallery

Lindsay has been Technician of Gippsland Art Gallery since 2012.

Lindsay came to the Gippsland Art Gallery with highly developed photography skills grounded in Military Service and refined in commercial practice. These skills have been adapted to significant benefit, both for digital records and publications for the Gallery.

Presenters



Anne Rowland
Co-Registrar,
Art Gallery of Ballarat

Anne Rowland came to museum work about 13 years after leaving secondary school, after time spent at art school and secondary art teaching. She began as a volunteer in the Registration Department of the National Gallery of Victoria, one day a week, which led to a three month position in 1987 to manage the first NGV-initiated loan exhibition which travelled to Germany as a pre-bicentennial gift. The extent of exhibition programs for the Bicentennial in 1988 meant an additional position was created in the department which Anne secured.

Anne remained in Registration at the NGV until the end of 1998, leaving the institution as the first Relocation Project Manager, but it was time for something different.

In April 1999 Anne arrived on the island of Unalaska in the Aleutian Islands, SW Alaska, to take up the position of Curator/Collections Manager for the Museum of the Aleutians, which eventually opened in August that year. It was an amazing and exhausting opportunity to be part of a new museum, setting up procedures - in an awesome place. Anne returned to Australia by the end of 2002.

In 2003 Anne became the Registrar at the Art Gallery of Ballarat. Since October 2015 Anne has job-shared this role with Robyn Walton. 2018 marks Anne's 15th year at the institution,

Venue

Gippsland Art Gallery **70 Foster Street** **Sale VIC 3850**

ABOUT

Established in 1965, Gippsland Art Gallery plays a vital role in the Arts and Culture of the region. Housed in the Wellington Centre together with the Sale Library and Sale Visitor Centre, the Gippsland Art Gallery is situated at the Port of Sale, overlooking stunning waterways and parkland. Every year the Gallery hosts around thirty exhibitions of local, national and international significance, in addition to ongoing and evolving displays of the permanent collection.

PUBLIC TRANSPORT

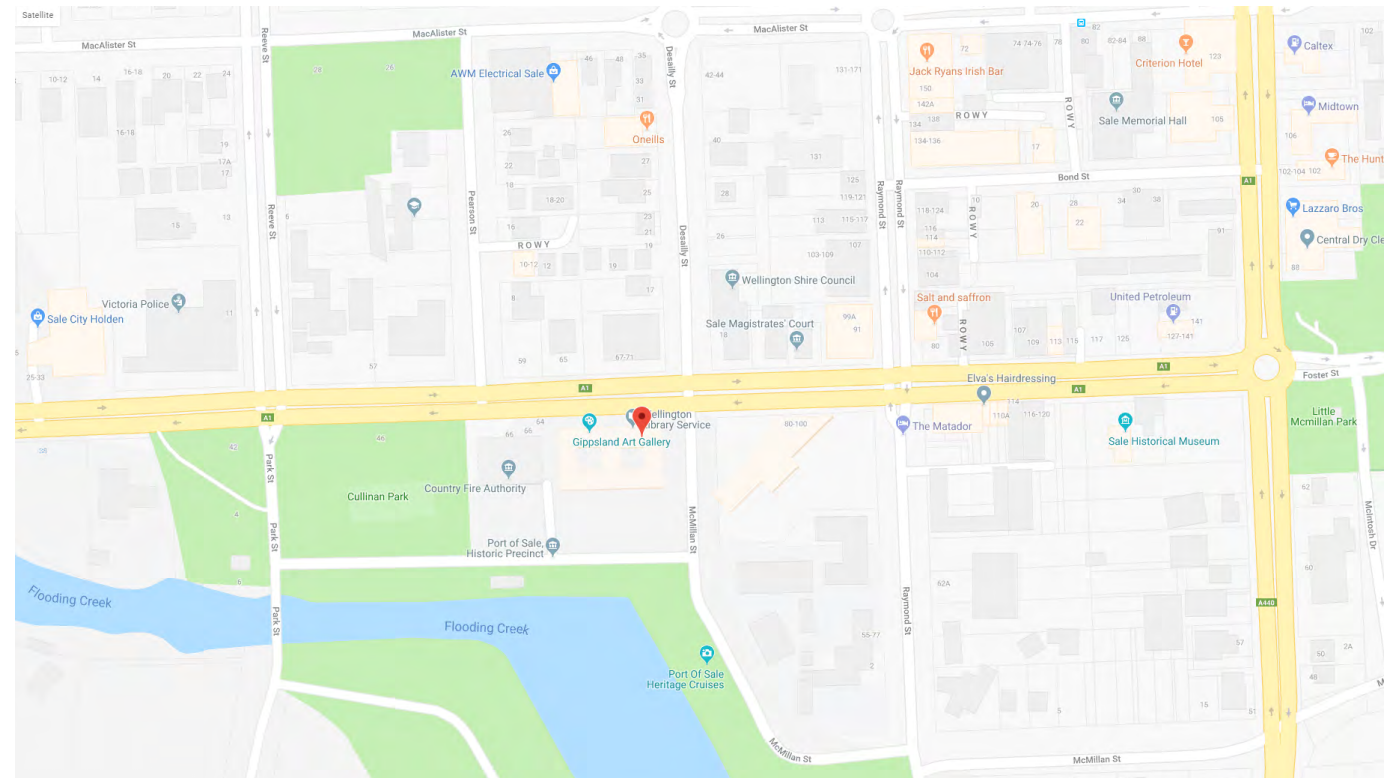
For train and bus timetables, please refer to the VLine website:

[VLine timetable](#)

BY CAR

Gippsland Art Gallery is at the intersection of Foster Street (Princes Highway) and McMillan Street, in the Wellington Centre.

By car Gippsland Art Gallery is around a two and a half hour drive from Melbourne.



Exhibition Tour

John Leslie Art Prize

The **John Leslie Art Prize** is one of Australia's most prestigious and valuable prizes for landscape painting. With a first prize of \$20,000, the Prize consistently attracts the highest calibre of artists working in Australia. An additional prize of \$1,000 is awarded to the best Gippsland work.

The Prize is named after the Gallery's long time Patron, John Leslie OBE (1919—2016), and continues through the generous ongoing support of the John Leslie Foundation.

Exhibition Dates: Saturday 22 September – Sunday 25 November 2018

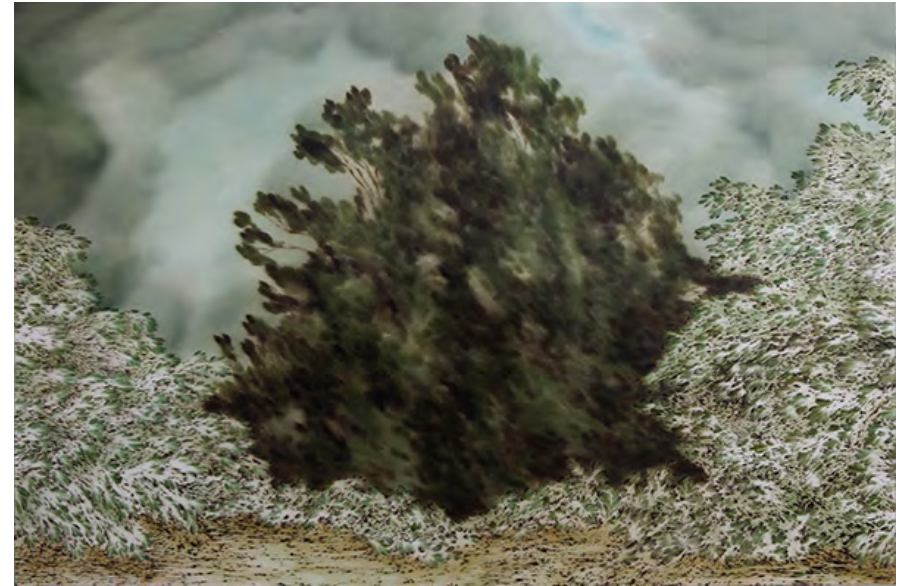
Impressions of Gippsland Kevin Lincoln

Kevin Lincoln's art is an act of reductionism. His airy and atmospheric landscapes represent moments of peace in a chaotic world, where one is given space to slow down and reflect.

Impressions of Gippsland features eleven elemental artworks created by Lincoln on various trips to the region between 1997 and 2003, and donated in their entirety in 2004.

Together they distil the essence of the region to form an elegiac symphony of whispers.

Exhibition Dates: Saturday 15 September – Sunday 18 November 2018



Images [Top - Bottom]
Amelda READ-FORSYTHE
Under the Storm, 2016
Oil on board, 60 x 91cm
Collection Gippsland Art Gallery.
Purchased, 2016. Winner *John Leslie Art Prize* 2016



Kevin LINCOLN
Gippsland Vic., 2003
Watercolour and charcoal on paper, 37.5 x 76cm
Collection Gippsland Art Gallery.
Donated by the artist through the Australian Government Cultural Gifts Program, 2004

Registration Details

Participants Bring

Notepad, pen, ideas and questions.

Price

- PGAV Member \$330 / Non-Member \$440
 - All costs are GST inclusive.
-

Bookings

Visit: <https://pgav.org.au/Collection-Management-Current-Issues~1172>

Registrations close Thursday 1 November 2018 at 12 noon.

Cancellation and Refund Policy

- Registered participants that are no longer able to attend may nominate a substitute up until the starting time. Where possible, please notify the PGAV of substitutions and cancellations by email, up until Thursday 1 November 2018 at 12 noon.
- Cancellations received before Thursday 1 November 2018 at 12 noon will be refunded, less an administration fee of \$55 including GST.
- Cancellations received after Thursday 1 November 2018 at 12 noon are not refundable.
- Exceptions are at the discretion of the PGAV.

*The PGAV wishes to thank all of the Presentation Partners for Collection Management - Current Issues:
Art Gallery of Ballarat, Bundoora Homestead Arts Centre, Department of Communications and the Arts, Gippsland Art Gallery, and RMIT Gallery*