

Glen Eira
City Council
gallery

Exhibitions
and public programs

January–July 2018



GLEN EIRA
CITY COUNCIL





Ponch Hawkes
poetry of the earth (xviii) 2016
 Digital archival print
 45 x 45 cm
 Courtesy of the artist
 Eva Light's Garden, Caulfield
Snapshot: Works from Council's art collection

Front cover image:
 Bruno Benini
No title (Fashion illustration. Model Susie Cuthbert)
 (detail) 1966 printed (1998)
 Gelatin silver photograph
 53.5 x 50.3 cm (image)
 National Gallery of Victoria, Melbourne
 Purchased, 1998 (1998.352)
 Courtesy of the Bruno Benini Estate
The New Look: 1960s Fashion in Melbourne

Exhibition dates

24 January–11 February

*Snapshot: Works from
 Council's art collection*

Varuni Kanagasundaram
*The Vivid Vernacular
 Cosmopolitans*

15 February–4 March

*International Baccalaureate
 Visual Arts Exhibition*

8–25 March

Glen Eira Artists Society
Just Looking

Glen Eira Cheltenham Art Group
Off the Easel

29 March–22 April

Dianna Wells
Finding Wild

The 2018 Cartoon Exhibition

27 April–27 May

*The New Look:
 1960s Fashion in Melbourne*

31 May–17 June

Outback Aboriginal Art
Desert Resonance

Justine Kuran
Paper Round

21 June–8 July

The Storytelling Machine

12–29 July

Jenny Zhe Chang
Beyond, A Century's Love II

Remembering Yosl Bergner



24 January–11 February

Snapshot: Works from Council's art collection

This exhibition reflects the diverse collecting themes that have shaped Glen Eira City Council's art collection since 1975. It includes suburban themes that reflect resident's lifestyles; the work of significant Australian artists; works by members of the Boyd family who lived and worked in Murrumbeena; and works of quality by local artists. Curated by Diane Soumilas, this exhibition features new acquisitions, including a major painting by Eleanor Hart recently donated to Council's art collection by the artist and photographs of local domestic interiors by Linda Wachtel commissioned by Council in 2017. Works by Fred Williams, Arthur Boyd, Brett Whiteley, Howard Arkley, George Johnston, Ponch Hawkes, Wolfgang Sievers, Erica McGilchrist and Jane Burton are also included in the exhibition.

Curator's floor talk

Friday 9 February at 12.30pm

Join Gallery Curator Diane Soumilas for an engaging talk about the diverse collecting themes that have shaped Council's art collection.

Linda Wachtel
Stories from the Interior (detail) 2017
Yvette, Caulfield East
Pigment ink on archival cotton rag, 50 x 70 cm
Courtesy of the artist
Glen Eira City Council art collection

24 January–11 February

Varuni Kanagasundaram
The Vivid Vernacular Cosmopolitans



Varuni Kanagasundaram
Fabric of Self 2016
Ceramic (Porcelain paper clay,
textile, slip, stain, glaze)
40 x 35 x 38 cm
Courtesy of the artist

Dispersion of people from their homeland and separation from their cultural connections brings a rich narrative that takes into account the journey and the experience of the migrant. This exhibition comprises the practical component of Varuni Kanagasundaram's PhD research at the School of Art, RMIT University. The ceramic installation captures the convergence of cultural traditions of women from the Indian subcontinent, and the landscape of those that inhabit boundaries of traditions as markings of textile and vivid pigments in clay.

Artist's floor talk

Friday 2 February at 12.30pm

Varuni Kanagasundaram will discuss her ceramics practice and the themes of migration and cultural identity addressed in this exhibition.

15 February–4 March

**International Baccalaureate
Visual Arts Exhibition**



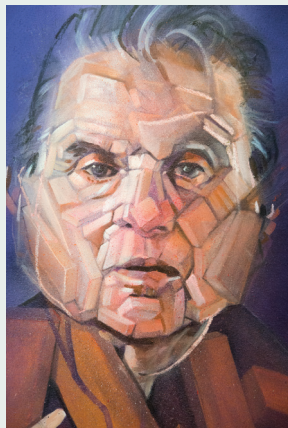
A diverse and exciting range of artworks from the International Baccalaureate Diploma Programme Visual Arts Course are featured in this exhibition. Selected student's work examined in 2017 will be displayed.

The works provide visitors with an understanding of the different approaches and the varied work produced in this unique two year study programme. Contemporary sculpture, photography, painting, textiles, drawing, digital media and printmaking are included in this exhibition.

Julia Gray-Jones
Kardinia International College
King of Chaos 2017
Acrylic and markers on canvas
185 x 60 cm

8–25 March

Glen Eira Artists Society
Just Looking



Wade Gregory Clark
Smoking Bacon (detail) 2017
Oil on linen
122 x 76 cm

Just Looking is the Glen Eira Artists Society's fifth major exhibition, which features diverse subject matter and a vibrant selection of paintings, drawings, sculpture and mixed media. Connections with the local community and their observations, experiences and different ways of observing life are captured in this exhibition.

8–25 March

Glen Eira Cheltenham Art Group
Off the Easel

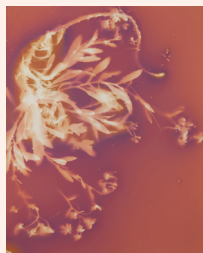


Pilar de la Torre
On Balance 2017
Oil on canvas
40 x 40 cm

Glen Eira Cheltenham Art Group's exhibition celebrates 55 years of creating art. This exhibition features a selection of current works, encompassing a diverse range of media and styles. It reflects the community spirit, love of art and determination to perfect the artistry of its members, from young students to established professional artists.

29 March–22 April

Dianna Wells
Finding Wild



Dianna Wells
Fireweed 2017
Lumen print on fibre based paper
35.5 x 28 cm
Courtesy of the artist

Finding Wild is an exhibition of hand printed photographs and lumen prints, engaging landscape, botany and 19th century photography to explore the notion of 'the new wild', where introduced plant species grow wild in bushland environments primarily within and surrounding Melbourne. These environments include Brighton's Dendy Beach Dune and Kilcunda on the Bass Coast. The lumen prints reference the cyanotype plant specimens of 19th century British artist Anna Atkins as a means to record the collection of introduced species within the photographic medium.

Artist's floor talk

Friday 6 April at 12.30pm

Photographer Dianna Wells will provide an engaging talk about her practice and the themes explored in this exhibition.

29 March–22 April

The 2018 Cartoon Exhibition

Presented by the Australian Cartoonists' Association (ACA), this exhibition contains prints of many historical cartoons and work by the best cartoonists working in Australia. Works by Mark Knight, Alan Moir and George Haddon are included.



George Haddon
The Art of Fishing 2016
© George Haddon

Australia has a strong and vibrant history of cartooning. The ACA was established in 1924 and is the world's oldest organisation for newspaper artists. Many of Australia's best cartoonists are members and for more than 30 years, the ACA has conducted the *Stanley Awards*, the biggest award for cartooning in Australia. The talent, rich diversity and creativity of many emerging and established Australian cartoonists, is captured in this fascinating exhibition.

Floor talk

Thursday 12 April at midday

Join Australian cartoonist Lindsay Foyle, and a group of other cartoonists for a lively discussion about the rich diversity of cartoons being created in Australia.



Athol Shmith

No title (Fashion illustration, Woman with double bass) 1960s

Gelatin silver photograph. 50 x 38.8 cm (image)

National Gallery of Victoria, Melbourne

Presented through The Art Foundation of Victoria by the Shmith Family, Governor, 1995 (1995.150)

© The Estate of Athol Shmith, Licensed by Kalli Rolfe Contemporary Art

27 April–27 May

The New Look: 1960s Fashion in Melbourne

This exhibition showcases the fabulous exuberance and innovation of 1960s Australian women's fashion, through a vibrant selection of garments, accessories and fashion photography by Bruno Benini, Athol Shmith and Henry Talbot. A fresh new look emerged in Australian fashion during this exciting decade of cultural and social change, with a new generation of fashion designers influencing the youth fashion and culture of this period. Garments and accessories by diverse Melbourne labels and fashion designers, including Prue Acton and Norma Tullo, are featured providing a rich insight into the evolution of Australian fashion and the groundbreaking fashion styles such as the mini dress that symbolise the 1960s.

Curator Diane Soumilas.

The New Look: 1960s fashion in Melbourne
public programs — floor talks >



Henry Talbot
Fashion illustration for Pelaco shirts and Ford Falcon, models Jill Copner and Terence Donovan 1962
 printed 2016
 Inkjet print
 41.2 x 40.6 cm (image)
 National Gallery of Victoria, Melbourne
 Henry Talbot Fashion Photography Archive (119670)
 © Lynette Anne Talbot

The New Look: 1960s fashion in Melbourne **public programs**

Floor talks. Free admission.

Nicole Jenkins — author and collector

Friday 4 May at midday

Join award-winning author of books *Style is Eternal* and *Love Vintage* Nicole Jenkins for a discussion about her passion for collecting vintage fashion and the selected garments and accessories from the 1960s included in the exhibition.

Diane Soumilas — curator

Friday 11 May at midday

Join Gallery Co-ordinator/Curator Diane Soumilas for an engaging talk about the exhibition and an insight into the evolution of 1960s fashion in Melbourne during this vibrant decade of cultural and social change.

Lesley Sharon Rosenthal — writer and documentary filmmaker

Friday 18 May at midday

Lesley Sharon Rosenthal will provide a fascinating insight into the fashion and clothing precincts of Flinders Lane, Collins Street and Chapel Street during the 1960s. Lesley will entertain you with stories and images about some of Melbourne's innovative fashion designers and boutique owners who emerged during the swinging 60s.

The New Look: 1960s fashion in Melbourne
public programs — children's workshops >

The New Look: 1960s fashion in Melbourne **public programs**

Interactive children's fashion workshops

Saturday 28 April, 2pm–4pm

Sunday 6 May, 2pm–4pm

Come and create spectacular 1960s style garments with Barking Spider Visual Theatre inspired by *The New Look: 1960s Fashion in Melbourne* exhibition. This workshop creatively engages young children in designing and constructing their own innovative fashion garments, experimenting with a range of 1960s inspired materials, patterns and textures. This is the era of space-age fashion, psychedelic prints and neon colours, with the birth of the mini skirt, go-go boots, and bell-bottom pants, influenced by social movements such as hippies, mods and beatniks. Come, create, get wild and play.

Children are invited to add fashion elements to the display throughout the duration of the exhibition.

For children aged five to 10

Tickets: \$5 per child

Bookings are essential and open from mid-February 2018

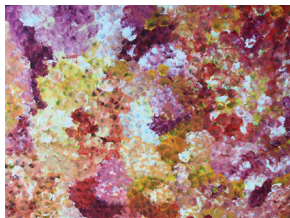
To book, visit www.gleneira.vic.gov.au/gallery

Children must be accompanied by adults.



31 May–17 June

Desert Resonance



Polly Ngale
Bush Plum 2016
Acrylic on canvas
140 x 120 cm
Courtesy Ironwood Arts, Alice Springs

Outback Aboriginal Art presents a dynamic exhibition of Aboriginal paintings and sculptures from the central and western desert regions of Australia. This stunning exhibition celebrates the powerful and highly collectable work being created in diverse Aboriginal communities and arts centres. A selection of recent paintings by senior desert artists from the Utopia region, Polly Ngale and Kathleen Ngale, are featured, along with paintings by Katarra Butler from Papunya Tula, Northern Territory.

Floor talk

Friday 8 June at 12.30pm

Director of Outback Aboriginal Art Jennifer Dudley will present a floor talk about the rich diversity of Aboriginal art and communities represented in the exhibition.

31 May–17 June

Justine Kuran Paper Round



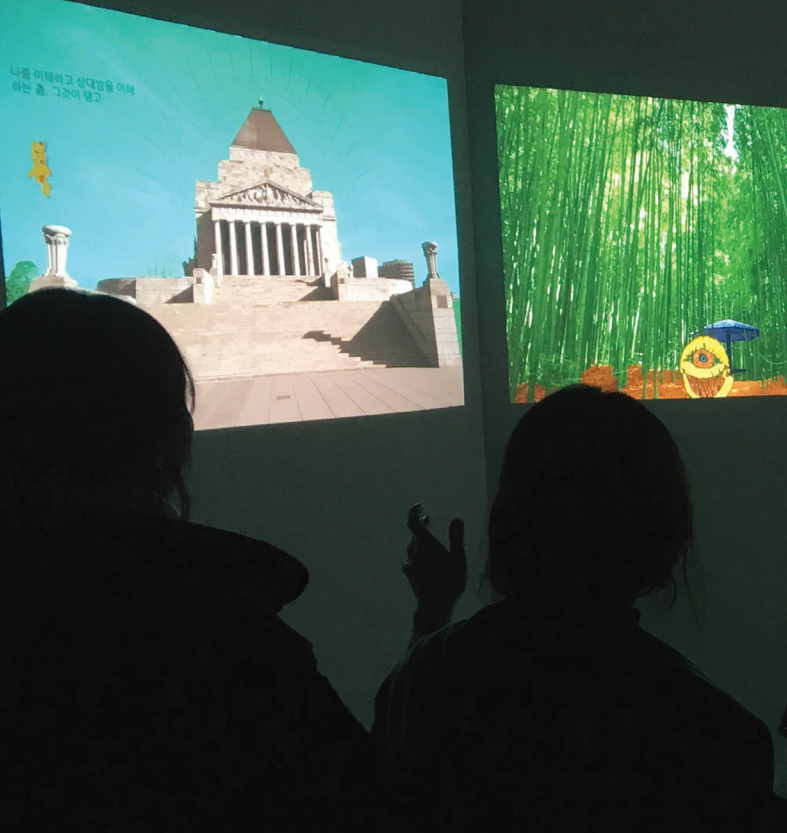
Justine Kuran
Spring has Sprung 2017
Paper
70 cm diameter
Courtesy of the artist

This exhibition is a visual feast of colourful three-dimensional artworks created entirely from paper using the ancient art form of 'quilling' or 'paper filigree'. Local artist Justine Kuran, known for her vibrant interpretation of iconic symbols, has created a series of contemporary art works that will be exhibited for the very first time.

Artist's floor talk

Friday 15 June at 12.30pm

Join artist Justine Kuran for an engaging discussion about her creative practice.



21 June–8 July

The Storytelling Machine

The Storytelling Machine is an immersive, interactive installation for an all-ages audience. The winner of the 2017 Victorian Premier's Design Award for Best Digital Design, *The Storytelling Machine* allows audiences to draw figures, feed them into a custom-made photo booth and watch as their characters are instantly animated across projected video 'worlds'. People can also contribute text in any language and watch their words fly.

Created by PluginHUMAN (Dr Betty Sargeant, Justin Dwyer, Peter Walker and Andrew Ogburn) the machine curates and delivers a large collectively-made story. It stores all drawings and text, so the more the work is shown, the bigger the collective story becomes. The work highlights what it's like to live in digitally connected automated cultures, where people move between geographic and virtual realities.

Interactive workshops will be held during the exhibition, teaching participants drawing skills; character illustration; digital animation and digital artwork design; and creative writing and editing.

For further information, see *Glen Eira Storytelling Festival 2018* at www.gleneira.vic.gov.au/stf or www.pluginhuman.com

12 July–29 July

Jenny Zhe Chang
Beyond, A Century's Love II



Jenny Zhe Chang
Signed Pointe Shoes Installation (detail) 2016
Dimensions variable
Courtesy of the Sui Jian Guo Art Foundation

Beyond, A Century's Love II is an extraordinary installation by artist Jenny Zhe Chang incorporating hundreds of signed ballet pointe shoes collected from the Queensland Ballet, the National Ballet of China and diverse ballet schools from the local and wider community. Jenny Zhe Chang is a Beijing born painter and sculptor living and working in Melbourne. This immersive installation explores notions of love, beauty, and identity, pushing the boundaries of ballet and art. The installation will be accompanied by the music *Amor De Mi Alma*.

Artist's floor talk

Friday 20 July at 12.30pm

Artist Jenny Zhe Chang will discuss this installation with a group of dancers from diverse ballet schools in Melbourne.

12 July–29 July

Remembering Yosl Bergner



Yosl Bergner
Brothers 2014
Oil on canvas
60 x 50 cm

Paintings and sculptures by celebrated Australian and Israeli artist Yosl Bergner are featured in this exhibition. Renowned for his powerful social realist style and a compelling depiction of the human condition, the works in this exhibition are rich in symbolism and drawn from a private collection in Melbourne. Yosl Bergner (born 1920, died 2017) lived and worked as an artist in Melbourne from 1937 until 1948 and influenced many Australian artists during this period. He moved to Israel in the early 1950s where he exhibited and worked creatively, developing new bronze sculptures in the last decade of his life.

Floor talk

Friday 27 July at midday

Shaike Snir will present a fascinating talk about the art of Yosl Bergner, his mentor and friend, offering a rare insight into his career.

Upcoming exhibitions

2–19 August

*23rd Annual B'nai B'rith
Shalom Menorah Unit Jewish
Youth Art Competition*

22 August–9 September

*Twenty Melbourne Painters
Society*

13 September–7 October

*Aussie Rules: Passion and Pain
Presented by the Rotary Club
of Caulfield Inc*

11–21 October

*Glen Eira City Council Youth
Services
2018 Youth Art Exhibition*

*Artworks by senior residents
living in Glen Eira —
Gallery Annexe*

25 October–18 November

*Jane Austen
Be Persuaded*

23 November–9 December

*A.M.E. Bale Art Award
and Exhibition*

Winner of the 2017 Youth Art
Exhibition (Senior section)
Orr Zaacks (aged 16)
Another starry night
Ceramic



History of the Gallery

Since opening in 1975, Glen Eira City Council's Gallery has established a prominent profile within the public gallery sector in Melbourne. Located on the ground floor of the historic Glen Eira Town Hall, access to the Gallery is gained through the majestic classically styled portico on the corner of Glen Eira and Hawthorn Roads, Caulfield.

Through the exhibitions, the regular rotation of Council's permanent art collection in public areas of the Town Hall, and the production of curated survey and thematic exhibitions featuring major contemporary Melbourne artists, the Gallery plays an important role in contributing to a rich cultural life for the residents of Glen Eira and the wider community.

Gallery hire

The Gallery is a popular hire space for local artists and other groups. The floor-to-ceiling panels can be moved to divide the Gallery into half or a full gallery space. The Annexe space is also available for use by community groups at no cost.

Online applications are accepted March–June via Council's website, visit www.gleneira.vic.gov.au/gallery-hire.

For further information contact, 9524 3333 or email arts@gleneira.vic.gov.au

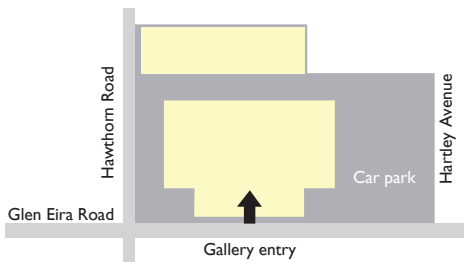
Glen Eira City Council Gallery
Boyd Women
Exhibition installation
6 October–10 December 2017



Glen Eira City Council gallery

Corner Glen Eira and Hawthorn Roads
Caulfield 3162
9524 3333

Enter via Glen Eira Road



GLEN EIRA
CITY COUNCIL

Bentleigh
Bentleigh East
Brighton East
Carnegie
Caulfield
Elsternwick
Gardenvale
Glen Huntly
McKinnon
Murrumbeena
Ormond
St Kilda East

Admission is free.

Gallery hours:

Monday to Friday, 10am–5pm.

Weekends, 1pm–5pm.

Closed public holidays.

The Gallery is wheelchair accessible.

There is also accessible parking in the car park.

Public transport: tram route 64, bus route 623

www.gleneira.vic.gov.au

arts@gleneira.vic.gov.au



/gleneiraarts