



Sit. Walk. Wonder

CHLOE VALLANCE

Friday 24 June – Sunday 31 July 2022

Sit. Walk. Wonder explores studio-based drawings by local artist Chloe Vallance. Chloe's works are developed by observing everyday activities of people and animals. Chloe is interested in moments of contemplation. Often the figures in her works are seen to be looking into the middle distance, pausing or walking, each on their own journey.

Image: Chloe Vallance, *Music* (detail), 2021, colour pencil on plywood, 29.5 x 35cm



Creative Minds

Friday 5 August – Sunday 11 September 2022

A showcase of artworks created by Nillumbik's VCE Art, Studio Arts and Design students. An annual exhibition presented at the Eltham Library Community Gallery.

Showcasing works from the following schools: Catholic Ladies College, Eltham College, Eltham High School & Plenty Valley Christian College

Image: Bianca Walker, *Loss* (detail)
Catholic Ladies College



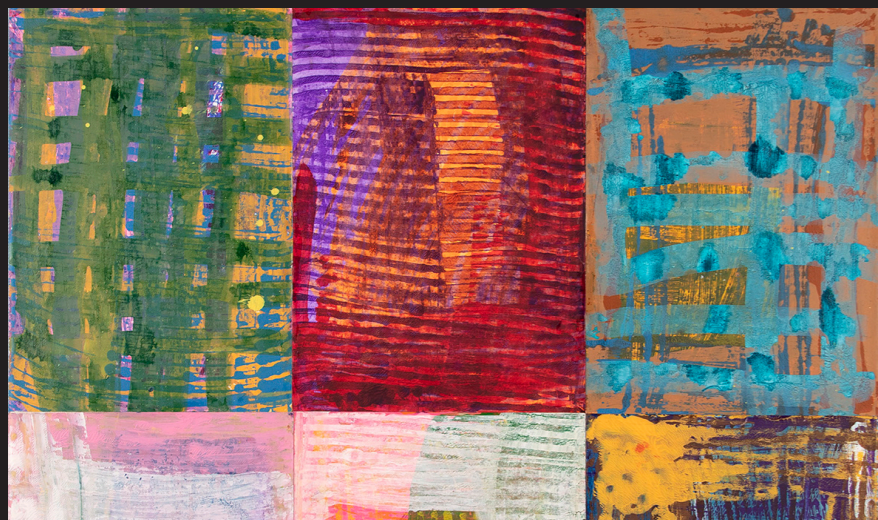
Of Two Minds

CATRINE BERLATIER AND CHANTAL STEWART

Friday 16 September – Sunday 23 October 2022

Of Two Minds is an exhibition of works by two friends of 40 years. Both originally from France, they share similar artistic sensibilities. Although they work in different mediums, there is a common thread of lightness, purity of lines and elegance present in both their practices, be it Chantal's graceful drawings and refined ceramics, or Catrine's delicate jewellery and diaphanous textiles, knitted or embroidered.

Image: Chantal Stewart, *Vessel 1* (detail), 2021, Stoneware, 26 x 20cm



Art and Agency

ARALUEN CENTRE

Friday 28 October - Sunday 4 December 2022

Art and Agency is an exhibition that celebrates the art created by artists with a disability. Araluen is an organisation supporting adults with disabilities. It's supported studios Art Connects, provides the artists the space and the assistance they need to create wonderful works of art. This exhibition will give a number of these artists an opportunity to plan and develop their own exhibition. It will give them choice and control and highlight a community of artists that have historically been overlooked. www.araluen.org

Image: Melissa Kent, *Spaces inbetween* (detail), 2020, mixed media, 84 x 89cm



diversARTy

LIVING & LEARNING NILLUMBİK

Friday 9 December 2022 – Sunday 22 January, 2023

In December each year Living & Learning Nillumbik hold an exhibition at the Eltham Library Community Gallery which showcases the work of current participants and tutors including visual arts, ceramics, textile, glass, crafts and more. It celebrates the diversity of activities, abilities and people who come together to share, learn and connect at our centres. www.livinglearningnillumbik.vic.gov.au

Image: Julie Barrington, *Magical Creatures*, 2021, Stoneware, shino glaze, dimensions variable

Eltham Library Community Gallery Program

July - December 2022

TO APPLY FOR AN EXHIBITION IN 2023  

The Eltham Library Community Gallery (ELCG) will be accepting expressions of interest in July 2022 for the ELCG 2023 Program. Subscribe to the Nillumbik Arts e-newsletter by emailing artsinfo@nillumbik.vic.gov.au or follow the [Nillumbik Arts on Facebook](#) or [Instagram](#) to keep in the loop about this opportunity.

OPENING HOURS

Visit the Eltham library website for opening hours: yprl.vic.gov.au/locations/eltham-library/

We acknowledge the Wurundjeri Woi wurrung people as the Traditional Owners of the Country on which Nillumbik is located, we pay our respects to Elders past, present and future, and extend that respect to all First Nations People. We respect the enduring strength of the Wurundjeri Woi-wurrung and acknowledge that sovereignty was never ceded.

**ELTHAM
LIBRARY
COMMUNITY
GALLERY**

**ARTS AND
CULTURE**

